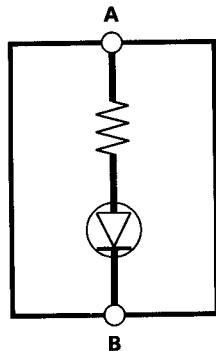
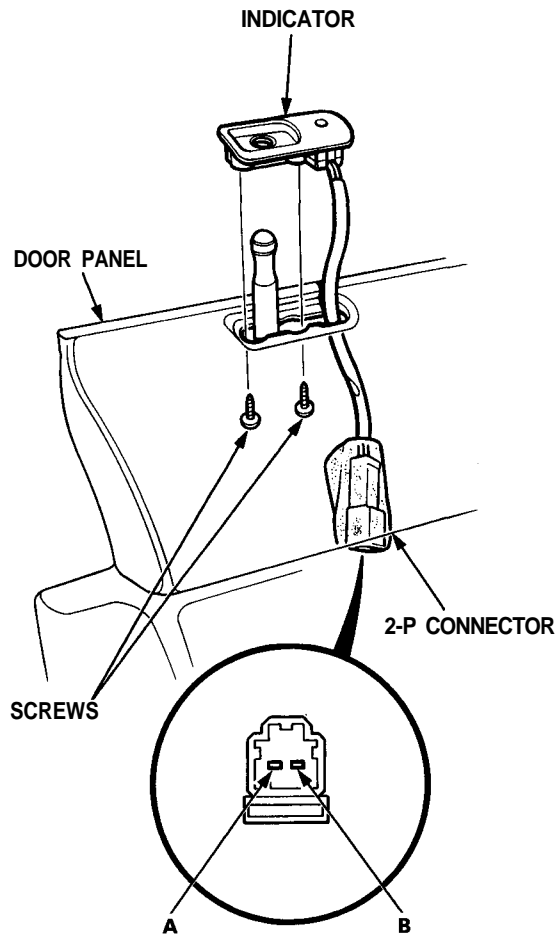


Security Alarm System

Indicator Replacement

1. Remove the door panel (see [section 20](#)).
2. Remove the two screws from the indicator.
3. Remove the indicator from the door panel.



Hood Switch Test/Replacement

1. Open the hood.
2. Disconnect the 2-P connector from the hood switch.
3. Check continuity between the A and B terminals.
 - There should be continuity with the lever released (hood opened).
 - There should be no continuity with the lever pushed down (hood closed).

